

SWC100 MOTORCYCLE WHEEL CHOCK

OWNER'S MANUAL



FOR YOUR SAFETY
PLEASE READ THESE INSTRUCTIONS CAREFULLY
AND RETAIN THEM FOR FUTURE USE.



SPECIFICATION

MODEL No	SWC100
Max. Load capacity	600 kg
Suitable tire sizes	16" - 19"
Overall tire diameter	720 mm

WARNINGS



Read and understand instructions before use.



Always wear eye/face and hand protection.



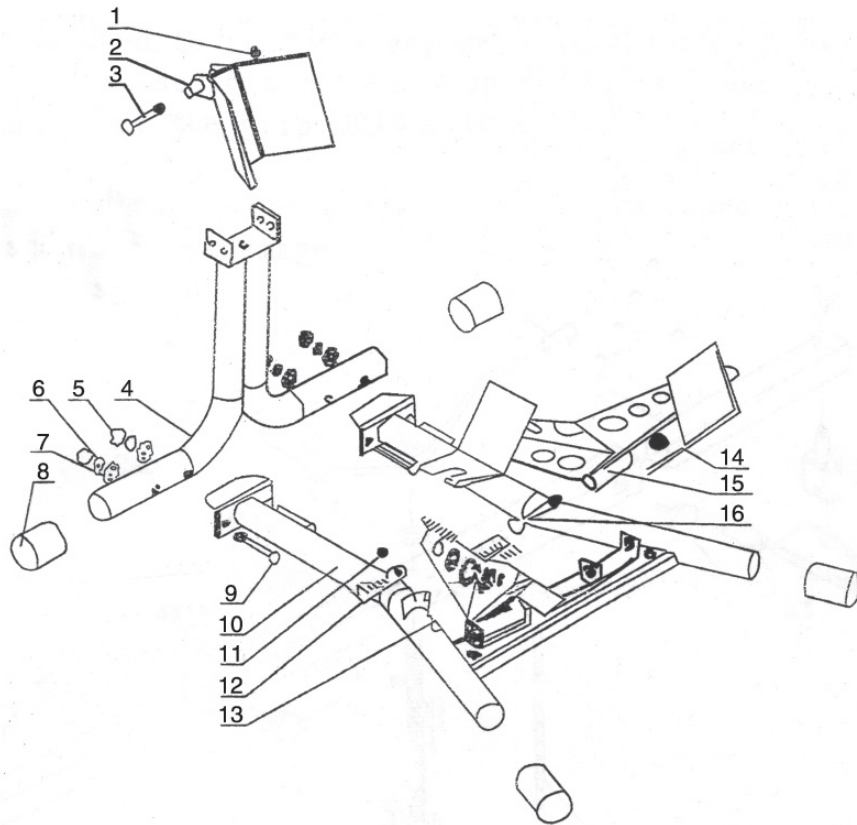
Use the correct product for your application. Make sure your motorcycle's wheel fits in the Motorcycle Stand. Do not modify this product or use it for a purpose for which it is not intended.



As with all machinery, there are certain hazards involved with its operation and use. Exercising caution will reduce the risk of personal injury.

1. Do not exceed maximum load for this product (1,800 pounds). Loading a heavier motorcycle on the Stand can result in dangerous conditions to both the operator and the item loaded.
2. Always mount the Motorcycle Stand securely on level, dry surfaces that are capable of bearing the combined weight of the Stand and motorcycle.
3. Do not ride a motorcycle onto the Stand.
4. Never sit on the motorcycle while it is loaded on the Stand. Never lie down under parked motorcycle.
5. Do not use for aircraft purposes.
6. The warnings, precautions, and instructions discussed in this instruction manual cannot cover all possible conditions and situations that may occur. It must be understood by the operator that common sense and caution are factors which cannot be built into this product, but must be supplied by the operator.
7. Have product serviced by a qualified repair person using only identical replacement parts. This will ensure that the safety of the product is maintained.
8. Maintain labels and nameplates on the product. These carry important safety information. If unreadable or missing, contact SGS for a replacement.
9. Because when using the motorcycle stand, the tires are still loaded by the weight of the motorcycle, the motorcycle stand is not for storing motorcycles in winter.

PARTS DIAGRAM



PARTS LIST

No	Description	Qty	Part No
1	Nut	1	902244
2	Plate	1	902245
3	Bolt	1	902246
4	Post	1	902247
5	Nut	4	902248
6	Spring Washer	4	902249
7	Washer	4	902250
8	Cover	4	902251
9	Bolt	4	902252
10	Base	1	902253
11	Nut	1	902254
12	Safety Hook	1	902255
13	Bolt	1	902256
14	Nut	1	902257
15	Bracket	4	902258
16	Bolt	4	902259

ASSEMBLY

1. Use the exploded view or parts list to assemble the stand.
2. Mount the column to the base using the screws, washers and nuts provided.
3. Fasten the rocker with the help of bolts and nuts.
4. Mount the retaining plate on top of the column and secure it with the screws and nuts.
5. Check before use whether the weight of the motorcycle (including the load) does not exceed the max. Capacity of the stand exceeds.
6. Secure the motorcycle after driving up using the safety hooks and bolts.

MAINTENANCE

Check regularly the screw connections of the stand. If necessary, tighten the screws and nuts.

Clean the stand only with a slightly damp cloth. Do not use aggressive cleaning agents or solvents!

In case of disposal of this device, please contact DEMA Vertriebs-GmbH, your local dealer or a local recycling agent. Never take the device to a municipal collection point! Do not dispose of the device with normal household waste! They make an important contribution to the preservation of the environment.

FOR YOUR SAFETY
PLEASE READ THESE INSTRUCTIONS CAREFULLY
AND RETAIN THEM FOR FUTURE USE.



SGS Engineering (UK) Ltd
West Side Park
Raynesway
Derby, DE21 7AZ

EC Declaration of Conformity

This is an important document and should be retained

MANUFACTURER'S NAME: SGS Engineering (UK) Ltd

TYPE OF EQUIPMENT: Motorcycle Wheel Chock

PART NUMBER: SWC100

APPLICATION OF EC COUNCIL DIRECTIVES / STANDARD:

2006/42/EC Machinery Directive

EN 12100:2010

I, the undersigned, hereby declare that the equipment specified above conforms to the above European Communities Directive(s) and Standard(s).

PLACE: Derby, UK

DATE: 24th MAY 2018

A handwritten signature in black ink, appearing to read 'Robert Wyatt', written over a horizontal line.

(Signature)

Robert Wyatt
Company Secretary